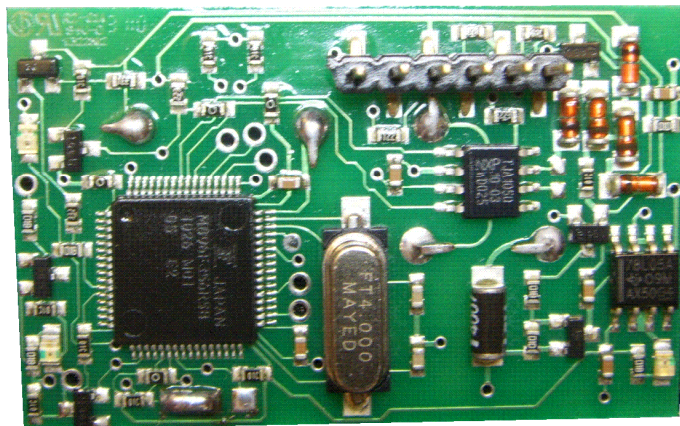


Manual Happylightshow

For Astra J, Insignia A, Zafira Tourer
Chevrolet Cruze, Orlando



GA 4.02 Rev 1.00

Übersicht

1. Mounting and Start-Up	3
2. Setup Instructions	4
3. Functional Description	8
4. Multi-Function-Display	12
5. Visual Parking Aid	14
6. Legal Meaning	15

1. Mounting and Start-Up

The module is plugged onto the diagnostic link connector,
Which is located in the legroom of the left front seat.
Please be sure, that no pins are bent before you start mounting the module.
The 6-pin connection plug on the front must be pointing up.



When the module is active (Green LED is lighting) the orange LED should blink and the red LED should glow. When the engine is running only the green LED is lighting.

2. Setup 1/4

1 Activation of the setup menu

requires: Ignition on, Engine off.

Activation:

Actuate **Brake, FlashTopass** and **Turn Signal Left** simultaneously.

-> All telltales inside the instrument will light up.

2 Setup the configurations

The speedometer shows the digit (0km/h = Digit 0, 50km/h = Digit 5).

The Tachometer shows the value of the dialed digit (1000rpm = 1, 5000rpm = 5).

To go to the next digit you have to tip the **Brake**.

To change the value you have to tip the **Clutch**.

(alternative you can switch the lightswitch to parking light position and back)

When the module is new, please setup Digit0 first.

3 Safe configuration

After setting up the module the way you like it, you have to save it.

This is done by activating **Turn Signal Right**.

The Configuration is stored inside the our Flash Memory, so the informations are not lost after disconnecting the module from the car..

Setup is now completed.

2. Setup 2/4

4 Meaning of the digits

Digit 0: (model choice)

- 0 = Insignia 4/5 Door from MY10
- 1 = Insignia 4/5 Door to MY10
- 2 = Insignia ST to MY10
- 3 = Insignia ST from MY10
- 4 = Astra J / Cruze from MY10,*
- 5 = Cruze to MY10

Digit 1: (Daytime Running Lights)

- 0 = off ,*
- 1 = Fog DRL on
- 2 = dimmed Low Beam on*

Digit 2: (WTTC Front 1) has priority

- 0 = off
- 1 = Lightshow (front and back)
- 2 = FogLights with TurnLights ,*
- 3 = LowBeam with TurnLights*
- 4 = DRL with TurnLights
- 5 = DRL with TurnLights
- 6 = DRL

Digit 3: (WTTC Front 2) Be sure that Digit 2 = 0

- 0 = off
- 1 = FogLights
- 2 = LowBeam*
- 3 = HighBeam*
- 4 = FogLights and LowBeam*
- 5 = FogLights and HighBeam* ,*
- 6 = LowBeam and HighBeam*

Digit 4: (WTTC Back)

- 0 = off
- 1 = RearFogLight
- 2 = BackUpLight
- 3 = BackUpLight and TurnLights
- 4 = TailLamp and TurnLights ,*
- 5 = TailLamp and BackUpLight
- 6 = TailLamp

* For Cars without Xenons

2. Setup 3/4

4 Meaning of the digits

Digit 5: (WTTC time)

0 = off

1-6 x 10 seconds , * 2

Digit 6: (Activation of the WTTC)

0 = off

1 = every command of the radio key

2 = double command of the radio key

3 = WTTC sequence with standard light sensor (Chirp is not supported) , *

Digit 7: (Chirp)

0 = off , *

1 = every command of the radio key

2 = double command of the radio key

Digit 8: (FlashToPass with foglights)

0 = off

1 = on , *

Digit 9: (HazardLight with opened trunk)

0 = off

1 = on , *

Stelle 10: (Outside Reaview Mirror unfold)*

0 = off , *

1 = on ²

Digit 11: (TrunkLights Activation) only Insignia ST

0 = off , *

1 = internal TurnLights on

2 = internal TailLamps on

3 = both an

² only with automatic foldable mirrors and memory seats

2. Setup 4/4

4 Meaning of the digits

Digit 12: (Speedlock)

- 0 = off
- 1 = on ,*

Digit 13: (Additional Lighting in reverse gear)

- 0 = off
 - 1 = Insignia ST on
 - 2 = All other modells on ,*
- Activating with doubleclick when Reverse driving**

Digit 14: (Multi-Function-Display and Default Settings)

- 0 = MFD not activatable
- 1 = MFD activatable ³ ,*
- 2 = MFD reset (For Example: Consumption reset)
- 3 = Module reset to default

Digit 15: (Visual Parking Aid)

- 0 = off
- 1 = on ° ,*

Digit 16: (Multi-Information-Display alternative Settings)

- 0 = normal ,*
- 1 = Boost Pressure (in %) and Oilpressure(bar) Alt1
- 2 = Boost Pressure (in %) and Acceleratorposition(in %) Alt2

Digit 17: (Language)

- 0 = German ,*
- 1 = English

² only with multifunctional steeringwheel

³ only with high content instrument and multifunctional steeringwheel

° only with Ultrasonic Parkassist and high content instrument

3.Functional Description

3.1 Adjustable Functions

Model Choice (Digit0)

Please choose your car model here.

Daytime Running Lights (Digit1)

You can choose which lights should light in addition to the normal Daytime Lights.

WTTC (Digit2-6):

The WTTC Function controls the ambient lighting.

The Start Trigger is setup with Digit6.

The Digits 2-5 are used for the general adjustment.

WTTC sequence with light sensor(Digit6=3)

The WTTC starts, when the car is open with the radio key and the lightsensor recognize the darkness.

Also the WTTC starts after the engine is turned off ,the driver door is being opened and the lightsensor recognizes the darkness.

3.Functional Description

Chirp (Digit7):

The horn sounds when the car is opened/closed

Hint:

Only works when Digit6 is not 3

FlashToPass with fog lights(Digit8):

When FlashToPass is activated by the driver, the fog lights will be lighting to.

Hazardlights with opened trunk(Digit9):

When trunk is opened the Hazardlights will be lighting too.

Mirror unfold (Digit10):

With tipping the FOB twice „open“ the mirror will unfold, or when the car is moving off. (only with Memory seats)

3.Functional Description

TrunkLights Activation (Digit 11 only *Insignia Sportstourer*):

If the trunk is open the internal taillights will be on.

Speedlock (Stelle12):

The car will automatically be locked after moving off.

It will unlock after ignition will go off, or 'P' is selected by the driver.

Hint:

The Trunk and the fuel filler wont be released

Additional Lighting in reverse gear (Digit13):

When Reverse Gear is selected and the mute button on the steering wheel is double pressed the fog lights and the turnlights will additionally be selected providing extra illumination behind the car.

Multi-information-Display (Digit14):

Look in chapter 4.

Visual Parking aid(Digit15):

When the parking aid is active (Light in the Button is on) the visual parking aid is shown inside the instrument providing distance and direction to the obstacle .(If the standard animation is active, you have to cancel it, and then our animation will be shown).

3.Functional Description

3.2 non adjustable Functions

Lightshow:

Activation:

requires: Ignition on, Engine off.

Actuate **Brake, FlashTopass** and **Turn Signal Right** simultaneously.

To switch to the next light variation push **Brake**, the speedometer shows the actual variation (180km/h = variation 18)

Diesel Particle Filter – Display:

requires: high content Display

When the particle filter is doing his regeneration a Text Information pop up.

4. Multi-Function-Display

requires: high-content Display and Multifunctional-Steeringwheel

1. Activation:

If setup correctly starting the MFD is done by double pressing mute on the Steeringwheel.

2. Switching between the windows:

To shift to the **next** Windows,
Press **Vol+/Vol-** on the steeringwheel

To shift to the **previous** Windows,
Press **Vol-/Vol+** on the steeringwheel

3. MFD reset

To delete the saved values (like consumption) go to the setup and change Digit 14 to 2 and save it.

4. The windows:

1. Window: avg. consumption(l/100km) und range(km)
2. Window: act.consumption(l/100km oder l/h) and coolanttemp.(°C)
3. Window: Boost Pressure (max 1,27bar) and Oilpressure(bar)
 - 3a. Window: Boost Pressure (in %) and Oilpressure(bar) Alt1
 - 3b. Window: Boost Pressure (in %) and Acceleratorposition(in %) Alt2
4. Window: Enginespeed (U/min) and Speed (km/h)
5. Window: Batteryvoltage(V) and State of Charge(%)
6. Window: act. Torque(Nm) and Power(Hp)

Additional Multi Function Display

HappyLightshowModul

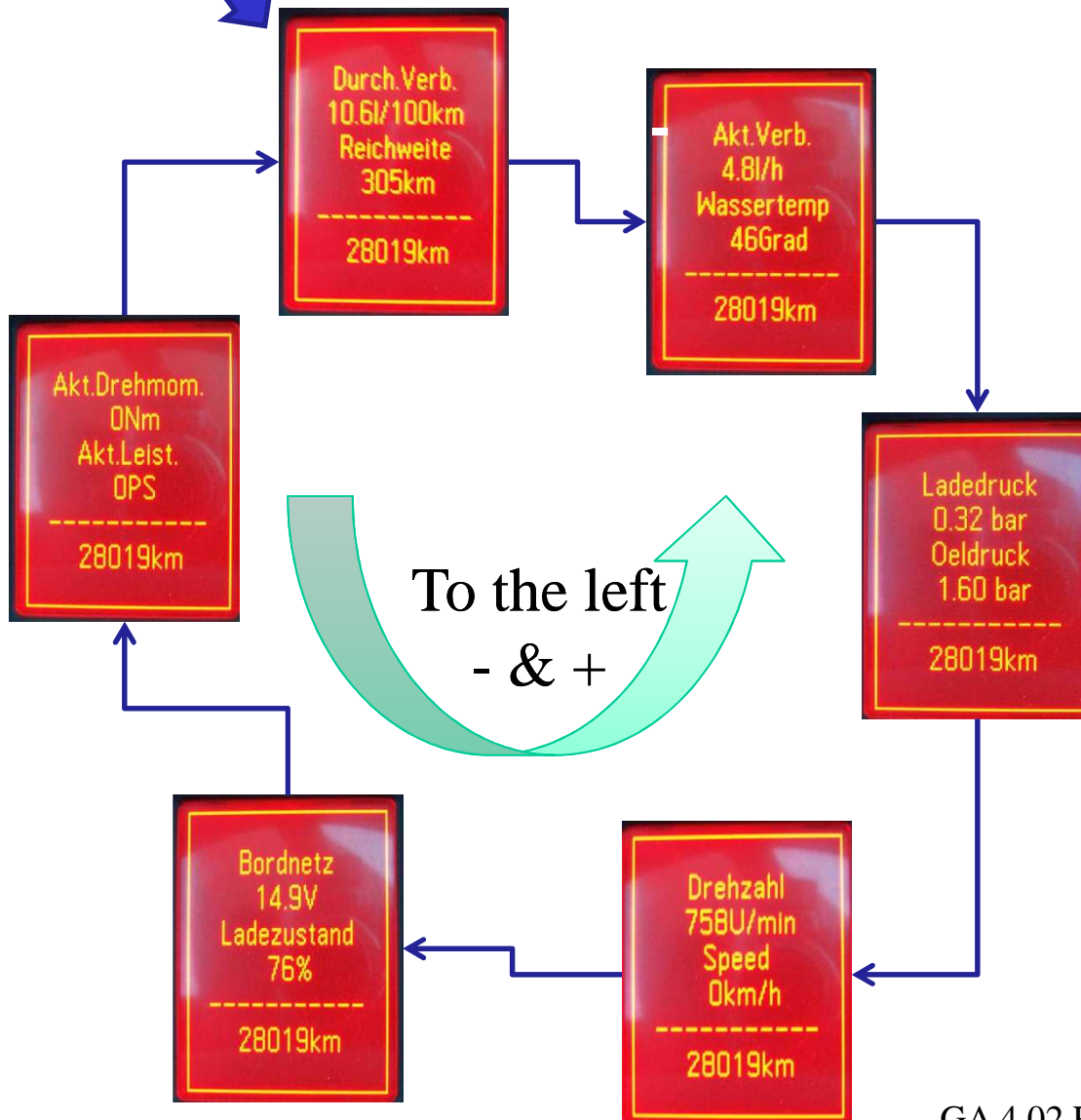
Opel Astra J, Insignia, Chevrolet Cruze etc.



Press once volume + and then volume - will switch to the next screen to the right.

With - and then + you switch to the left screen.

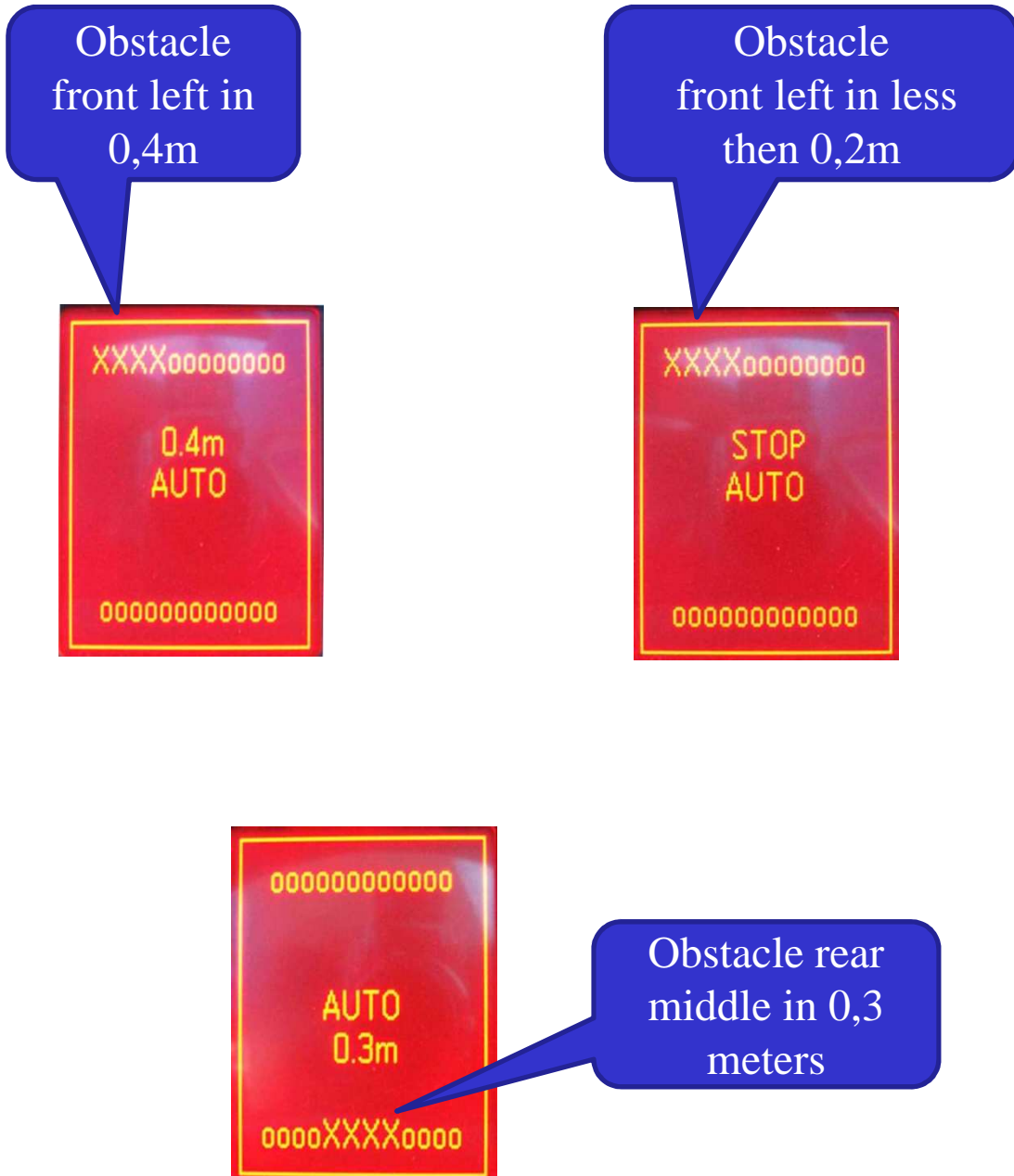
**Activating the Additional Display:
Digit 14 parameter should be 1
Digit 17 will change the language.**



Additional Function – Visual Parking Aid

HappyLightshowModul
Opel Astra J, Insignia, Chevrolet Cruze etc.

Activating: Parameter Digit 15 to 1



5. Legal meaning

The devices has no general type approval, thus it is not allowed to use it within the laws of road traffic.

By noncompliance the user will be responsible for any loss.